

POSITION DESCRIPTION

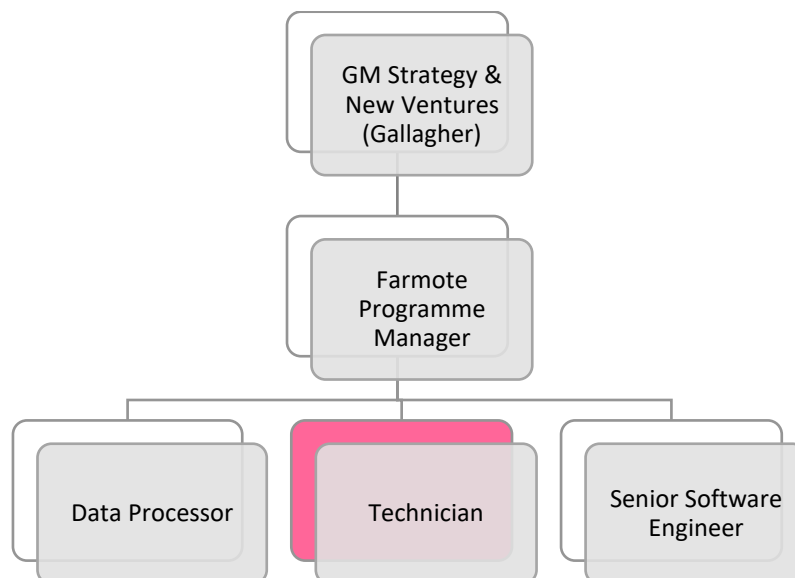
Position Title: Technician	Direct Manager: Farmote Program Manager	
Budget Responsibility: 0	Direct Reports: 0	Indirect Reports: 0

WHAT YOU'RE HERE TO ACHIEVE

Key purpose: The Technician is responsible for supporting the successful execution of the Farmote Systems project by ensuring the functionality of installed sensors, assisting in experimental setups, and contributing to data collection and analysis. The role is critical in maintaining the operational efficiency of field-based activities and sensor management.

You will be an integral part of the Farmote Systems project team. Your efforts will help ensure that all technical operations are running smoothly, that fieldwork is properly conducted, and that valuable data is accurately collected and processed to drive project success.

WHERE YOU'LL FIT IN #TEAMGALLAGHER



WHO YOU'LL BE WORKING WITH

INTERNAL RELATIONSHIPS	EXTERNAL RELATIONSHIPS
<p>Farmote Project Manager: Collaborate regularly for project updates, coordination, and issue resolution.</p> <p>Field Operations Team: Work closely with field team members to ensure data collection and sensor maintenance are conducted effectively.</p> <p>Data Analysis Team: Assist in organizing and processing collected data to support analysis and reporting.</p>	<p>Farm Test Sites: Travel to farm locations to ensure that sensor installations are properly maintained and operational.</p> <p>Suppliers and Vendors: Manage procurement and ensure timely maintenance of sensor inventory and spare parts.</p>

WHAT YOU'LL BE DOING

Key Accountability	Outcomes/ Expectations
Field Data Collection	<ul style="list-style-type: none"> • Travel to designated farm test sites to collect data, inspect installed sensors, and ensure operational functionality. • Conduct on-site troubleshooting and perform necessary adjustments to ensure sensor performance.
Experimental Support	<ul style="list-style-type: none"> • Assist in setting up experiments to test and validate sensor performance. • Accurately document experiment results and field observations to ensure reliable data.
Stock Management	<ul style="list-style-type: none"> • Manage mote sensor inventory, ensuring materials are adequately stocked, and order new parts when necessary. • Oversee the procurement and maintenance of spare parts and raw materials to prevent project delays.
Data Processing	<ul style="list-style-type: none"> • Assist in organising and processing satellite imagery and mote sensor data. • Ensure data is accurately compiled and ready for analysis and reporting.
Calibration and Maintenance	<ul style="list-style-type: none"> • Perform calibration and troubleshooting of mote sensors as per technical guidelines to ensure correct system performance. • Keep records of calibration procedures and sensor maintenance schedules.
Collaboration and Reporting	<ul style="list-style-type: none"> • Provide regular updates to the Farmote Project Manager regarding fieldwork, inventory status, and data analysis.

	<ul style="list-style-type: none"> • Communicate any issues or obstacles encountered during field operations and recommend solutions.
General Support	<ul style="list-style-type: none"> • Contribute to ad hoc technical and operational tasks, providing support wherever needed to ensure the success of the project.

Including any other duties not specified that may be required to complete the role, and as requested by the Reporting Manager.

HOW YOU'LL BE DOING IT

Qualifications and/or Experience:

- Familiarity with Microsoft Office Suite (Excel, Word, Outlook) for data entry and reporting.
- Strong organizational skills with experience managing inventory or stock.
- Basic technical aptitude with the ability to follow calibration and troubleshooting procedures.
- Willingness to travel to farm sites and work outdoors in various weather conditions.
- Prior experience in agriculture, environmental sciences, or sensor technologies is advantageous but not required.

Skills / Competencies:

- Proactive, self-motivated, and detail-oriented with the ability to work independently.
- Strong problem-solving skills and a solutions-oriented mindset.
- Good communication skills, with the ability to document technical processes clearly.
- Ability to manage multiple responsibilities and prioritize effectively in a fast-paced environment.
- Adaptability to work in dynamic environments, including outdoor field tasks.

Challenges:

- Adapting to variable outdoor conditions during fieldwork, which may impact data collection and sensor functionality.
- Managing inventory and stock levels effectively to ensure uninterrupted field operations.

Decisions:

- Ensuring that on-site sensor functionality is maintained and troubleshooting is performed promptly.
- Determining when sensors need calibration or maintenance and taking the necessary actions without direct supervision.